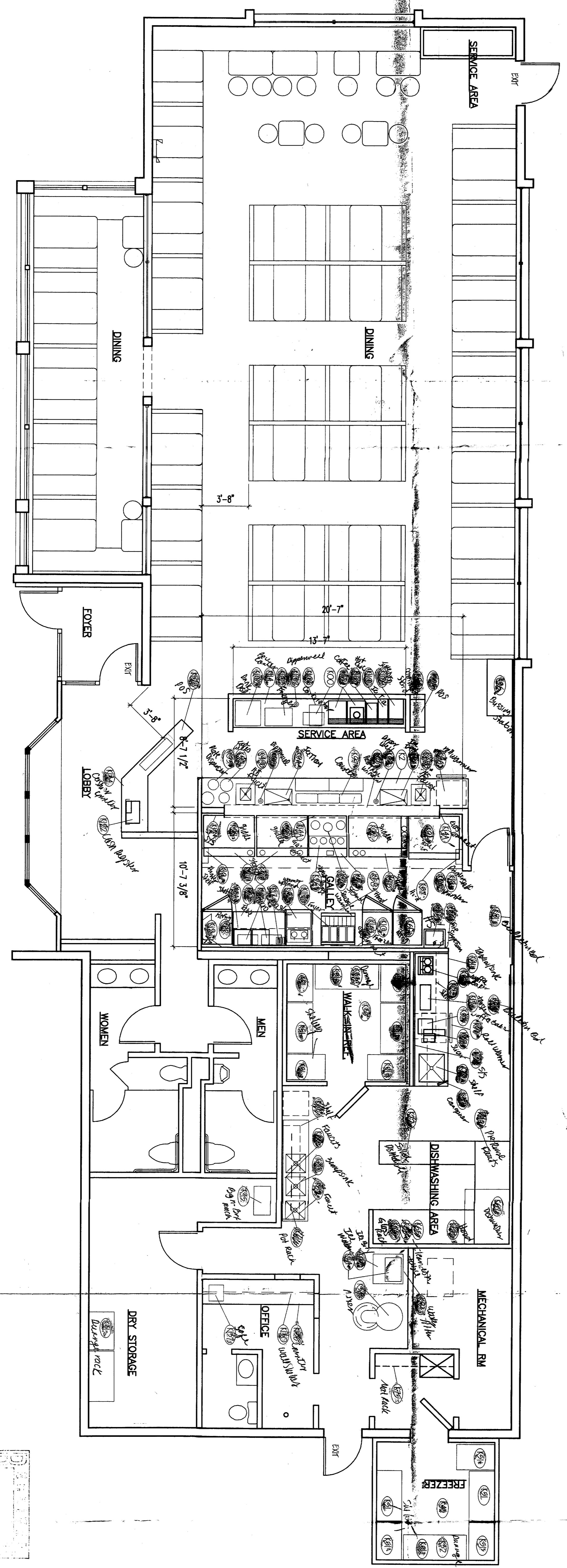


# KITCHEN EQUIPMENT SCHEDULE

K2. 3	MICROWAVE OVEN	K51	15" FLOOR DRAINAGE BRK	K10	55 CUSTOM ALUMINUM BRGS	K122	CASH REGISTER - BY OTHERS
K2. 4	FOOD STORAGE CABINETS	K52	15" WALK-IN FREEZER DRAWER BRGS	K12	SOLID DESHOWER W/ SINK - EXISING	K25	110T HIGH CHAIRS - EXISING
K3. 1	55 MICROWAVE/ TOASTER/ WAFFLE BAKER SHELF	K53	15" COOLER DRAWER BRGS	K13	ICE BIN - EXISING	K26	2 P.O.S. SYSTEMS - BY OTHERS
K3. 2	WAFFLE BAKER	K54	WALK-IN COOLER - EXISING	K14	ICE WAGER - EXISING	K28	2 P.O.S. SYSTEMS - BY OTHERS
K3. 3	55 REFRIG. IN REFRIGERATOR W/ CASEYERS	K55	WALK-IN COOLER - EXISING	K15	55.5 WARMER - BY O.C.	K30	2 OFFICE WALL SHELVES - BY OTHERS
K3. 4	WELL'S FOOD WRINKERS	K56	SLICER - EXISING	K16	AIR CLEANER - BY O.C.	K34	CASHIER COUNTER - BY OTHERS
K3. 5	55.5 WARMER W/ STAND	K57	5.5 PREP TABLE W/ WORK SINK	K17	REMANTE ICE MACHINE CONVEYER - EXISING	K36	OFFICE COUNTER - BY OTHERS
K3. 6	VILCOIN GEORDE TOP PANNE W/ CONV. OVEN	K58	5.5 PREP TABLE W/ WORK SINK	K18	BALL-BEARING FLOOR MMS	K37	FIREHOOD SVE - BY OTHERS
K3. 7	55.5 WALK-IN FREEZER	K59	WALK-IN FREEZER - EXISING	K19	REINFORC. AREX FLOOR MMS		
K3. 8	DEPAN FRIER CONFIGURATION W/ BALL-T-IN-FILTER	K60	5.5 REFR. TABLE (BY FRIER/OVEN)	K20	WATER FILTER FOR ICE MACHINE		
K3. 9	55.5 WALL PANELING	K61	HAND SINK	K21	SALAD REFRIGERATOR		
K3. 10	606 QUICK DISCONNECT (5/4")	K62	COMPONENT HAND SINK 50" X 48" MOUNTED FAUCET	K22	WELL'S FOOD WRINKERS #55-1011D		
K3. 11	55.5 TYPE II REFRIG. REFRIG. (NOT 9'0")	K63	COMPONENT PECK MOUNTED FAUCET	K23	APV/ INVOIT BLADE AND ROLL DRYERS		
K3. 12	WELL'S TOP-UP TOASTER	K64	5.5 HAND SINK CABINET	K24	COOL. ICE-TRAY		
K3. 13	FRY TITNER - BY OTHERS	K65	110T 55.5 RIN. NUMBERS FOR SHELVING	K25	ROLL WRINKER DRAINER - BY OTHERS		
K3. 14	55.5 NESTLEO PANNE SHELVES	K66	BIBBING STRAPON	K26	55.5 HOT-UP COINER		
K3. 15	55.5 STAND FOR 4'-0" GEORDE RIGHT HAND	K67	NEW EVIDENT HOOD (W/OPEN OVERHEAD)	K27	55.5 HOT-UP COINER		
K3. 16	55.5 STAND FOR 4'-0" GEORDE LEFT HAND	K68	COMPONENTS TO ACCOMMODATE NEW HOOD	K28	DELTALED ICE CREAM CABINET		
K3. 17	55.5 STAND FOR 4'-0" GEORDE CENTER W/ COMPOTE	K69	POT WASHING SINK - EXISING	K29	SILVER RING MILK DISPENSER W/ M/L NUMBERS		
K3. 18	ACQU. LEAF PANCAKE GRIDDLE - BY OTHERS	K70	POT WASHING SINK - EXISING	K30	CARBONATOR - BY OTHERS		
K3. 19	55.5 PAS THROUGH WINDOW ASSEMBLY	K71	POT WASHING SINK - EXISING	K31	DRINK DISPENSER - BY OTHERS		
K3. 20	WELL'S SALSAGE WARMER	K72	POT WASHING SINK - EXISING	K32	ICE TEA BREWER - BY OTHERS		
K3. 21	VILCOIN STEEL PANNE	K73	POT WASHING SINK - EXISING	K33	COFFEE GRINDER - BY OTHERS		
K3. 22	55.5 REMOTE CONTROL PANEL	K74	POT WASHING SINK - EXISING	K34	COFFEE DISPENSER - BY OTHERS		
K3. 23	HARGO HEAT LAMP - 8'-0"	K75	POT WASHING SINK - EXISING	K35	5.5 BEVERAGE COINER		
K3. 24	HARGO HEAT LAMP - 8'-0"	K76	POT WASHING SINK - EXISING	K36	HOT CHOCOLATE DISPENSER - BY OTHERS		
K3. 25	55.5 GEORDE HEAT LAMP 4'X2' (PART OF ITEM #K23)	K77	POT WASHING SINK - EXISING	K37	55.5 BEVERAGE COINER WALL SHELF		
K3. 26	55.5 GEORDE HEAT LAMP 4'X2' (PART OF ITEM #K23)	K78	55.5 GEORDE HEAT LAMP 4'X2' (PART OF ITEM #K23)				
K3. 27	55.5 GEORDE HEAT LAMP 4'X2' (PART OF ITEM #K23)	K79	55.5 GEORDE HEAT LAMP 4'X2' (PART OF ITEM #K23)				
K3. 28	55.5 GEORDE HEAT LAMP 4'X2' (PART OF ITEM #K23)	K80	55.5 GEORDE HEAT LAMP 4'X2' (PART OF ITEM #K23)				
K3. 29	55.5 GEORDE HEAT LAMP 4'X2' (PART OF ITEM #K23)	K81	55.5 GEORDE HEAT LAMP 4'X2' (PART OF ITEM #K23)				
K3. 30	55.5 GEORDE HEAT LAMP 4'X2' (PART OF ITEM #K23)	K82	55.5 GEORDE HEAT LAMP 4'X2' (PART OF ITEM #K23)				

# GENERAL NOTES

- SEE CUT SHEETS IN SPECIFICATION DOCUMENTS FOR GENERAL INFORMATION
- ALL COMPONENTS ARE EXISING UNLESS NOTED OTHERWISE.
- REFER TO ARCHITECTURAL DRAWINGS FOR MODIFICATIONS IN PLACE.



ROOM 1 & 2 W/W

MAR 31 2003

# EQUIPMENT ARRANGEMENT PLAN



Overall layout

DATE: 06-17-02  
 SCALE: NOTED  
 SHEET: K-1  
 OF: THREE

**IHOP RESTAURANT**  
 INTERNATIONAL HOUSE OF PANCAKE RESTAURANT

STORE #545  
 1804 PULASKI HIGHWAY  
 EDGEWOOD, MARYLAND 21040

**BOSS**  
 BOSS EQUIPMENT SERVICES, INC.  
 2801 E. MARSHALL ROAD, SUITE 100  
 ANNE ARD, MARYLAND 21015  
 410-440-7711 FAX  
 WWW.BOSSEQUIPMENT.COM

REVISIONS	BY
1	5/13/03 W/W